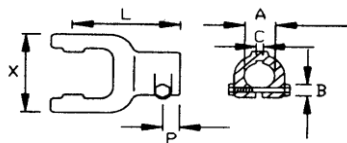



Round Bore Yoke with Keyway & Interfering Bolt



Series		A	C	F	X	P	L	Part No.
Series #1	22 X 54	20	6	M12	65	16	92	8-10171
		25	8	M12				8-10172
		30	8	M12				8-10173
		3/4"	3/16"	M12				8-10177
		1"	1/4"	M12				8-10178
Series #2	23.8 X 61.3	20	6	M12	71	18	97	8-10271
		25	8	M12				8-10272
		30	8	M12				8-10273
		3/4"	3/16"	M12				8-10277
		1"	1/4"	M12				8-10278
1-1/4"	5/16"	M12	8-10279					
Series #3	27 X 70	25	8	M12	80	18	102	8-10372
		30	8	M12				8-10373
		35	10	M12				8-10374
		1"	1/4"	M12				8-10378
		1-1/4"	5/16"	M12				8-10379
1-3/8"	5/16"	M12	8-10370					
Series #4	27 X 74.6	25	8	M12	85	18	109	8-10472
		30	8	M12				8-10473
		35	10	M12				8-10474
		1"	1/4"	M12				8-10478
		1-1/4"	5/16"	M12				8-10479
1-3/8"	5/16"	M12	8-10470					
Series #5	30.2 X 80	30	8	M12	89	20	112	8-10573
		35	10	M12				8-10574
		40	12	M12				8-10575
		1-1/4"	5/16"	M12				8-10579
		1-3/8"	5/16"	M12				8-10570
Series #6	30.2 X 92	30	8	M12	106	20	122	8-10673
		35	10	M12				8-10674
		40	12	M12				8-10675
		45	14	M16				8-10676
		1-1/4"	5/16"	M12				8-10679
1-3/8"	5/16"	M12	8-10670					
1-3/4"	3/8"	M16	8-1067A					
Series #7 OLD STYLE	30.2 X 106.5	35	10	M12	117	20	125	8-11174
		40	12	M12				8-11175
		45	14	M16				8-11176
Series #7	35 x 94	30	8	M12	106	20	122	8-10773
		35	10	M12				8-10774
		40	12	M12				8-10775
		45	14	M16				8-10776
		1-1/4"	5/16"	M12				8-10779
1-3/8"	5/16"	M12	8-10770					
1-3/4"	3/8"	M16	8-1077A					
Series #8	35 x 106.5	35	10	M12	117	20	125	8-10874
		40	12	M12				8-10875
		45	14	M16				8-10876
Series #9	41 x 108	40	12	M12	121	20	126	8-10975
		45	14	M16				8-10976
Series #10	41 x 118	40	12	M12	131	20	140	8-11075
		45	14	M16				8-11076