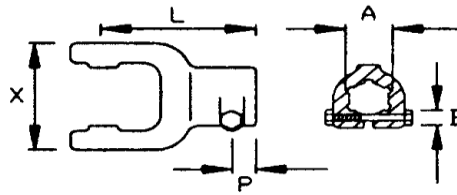



Splined Bore Yoke with Interfering Clampbolt



Shaft Size		A	B		X	P	L	Part No.
2100	22 X 54.8	1-1/8"-6	M12		65	16	92	8-010131
		1-3/8"-6	M12					8-010130
		1-3/8"-21	M12					8-010132
2200	23.8 X 61.3	1-1/8"-6	M12		71	18	97	8-010231
		1-3/8"-6	M12					8-010230
		1-3/8"-21	M12					8-010232
W1	27 X 70	1-1/8"-6	M12		80	18	102	8-10331
		1-3/8"-6	M12					8-10330
		1-3/8"-21	M12					8-10332
2300	27 X 74.6	1-1/8"-6	M12		85	18	109	8-010431
		1-3/8"-6	M12					8-010430
		1-3/8"-21	M12					8-010432
2400	32 X 76	1-3/8"-6	M12		89	20	112	8-010530
		1-3/8"-21	M12					8-010532
		1-3/4"-6	M16					8-010533
		1-3/4"-20	M16					8-010537
W11	34 X 90	1-3/8"-6	M12		89	20	112	8-015630
		1-3/8"-21	M12					8-015632
		1-3/4"-6	M16					8-015633
		1-3/4"-20	M16					8-015637
W220	30.2 X 92	1-3/8"-6	M12		106	20	122	8-10630
		1-3/8"-21	M12					8-10632
		1-3/4"-6	M16					8-10633
		1-3/4"-20	M16					8-10637
2500	36 X 89	1-3/8"-6	M12		106	20	122	8-016730
		1-3/8"-21	M12					8-016732
		1-3/4"-6	M16					8-016733
		1-3/4"-20	M16					8-016737
2600	42 X 104	1-3/8"-6	M12		121	20	126	8-010930
		1-3/8"-21	M12					8-010932
		1-3/4"-6	M16					8-010933
		1-3/4"-20	M16					8-010937